

# The Student Experience in the Research University (SERU-I)

**SERU-I Member  
University**

**Month, year**

## Ugrad SERU

Brief description of Ugrad SERU-I  
Survey Methodology

## INTRODUCTION

Participants  
Response rate  
Students Characteristics

## TIME USE & ACADEMIC ENGAGEMENT

Academic Engagement/ Disengagement  
Time Use  
Student-Faculty Interaction

## STUDENT DEVELOPMENT & SELF-ASSESSMENT

Student Self-Assessment  
Obstacles for Academic Success & Development

## STUDENT PLANS & GOALS

Educational Plans & Aspirations  
Career Goals

## CAMPUS ENVIRONMENT & STUDENT SATISFACTION

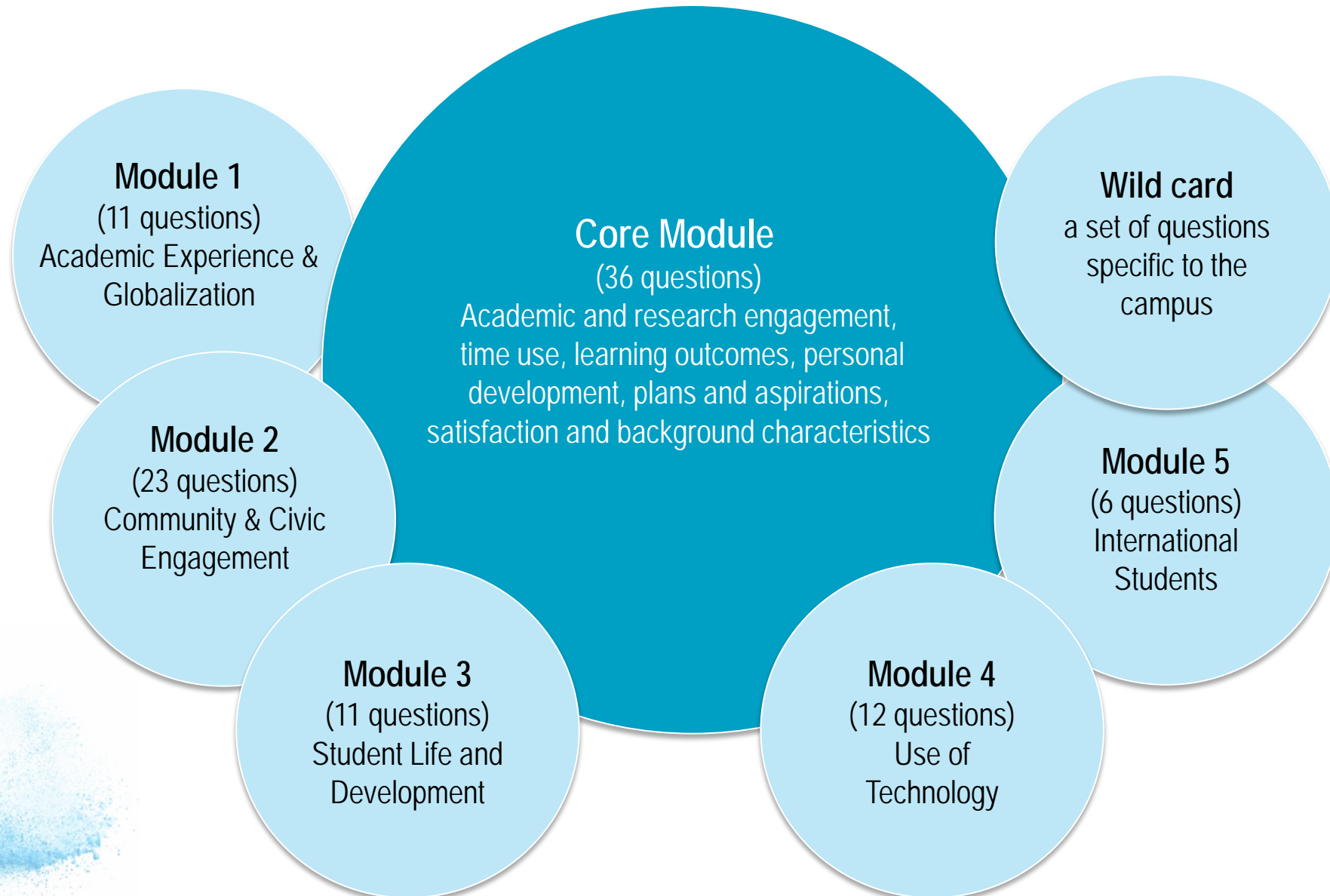
Campus Environment over time  
Student Satisfaction over time

# SERU-I Consortium & Ugrad Survey

The SERU-I Consortium is based at the Center for Studies in Higher Education at UC Berkeley and includes a selective group of top ranked international research universities sharing the following objectives:

- Develop and administer the SERU-I survey of undergraduate students in international research universities, parallel to the SERU survey in the US.
- Conduct research on the student experience, share best practices via SERU meetings, symposia, and joint-research projects.
- Collaborate with SERU-AAU Consortium members in the generation and sharing of institutional, comparative, and longitudinal data on the student experience.

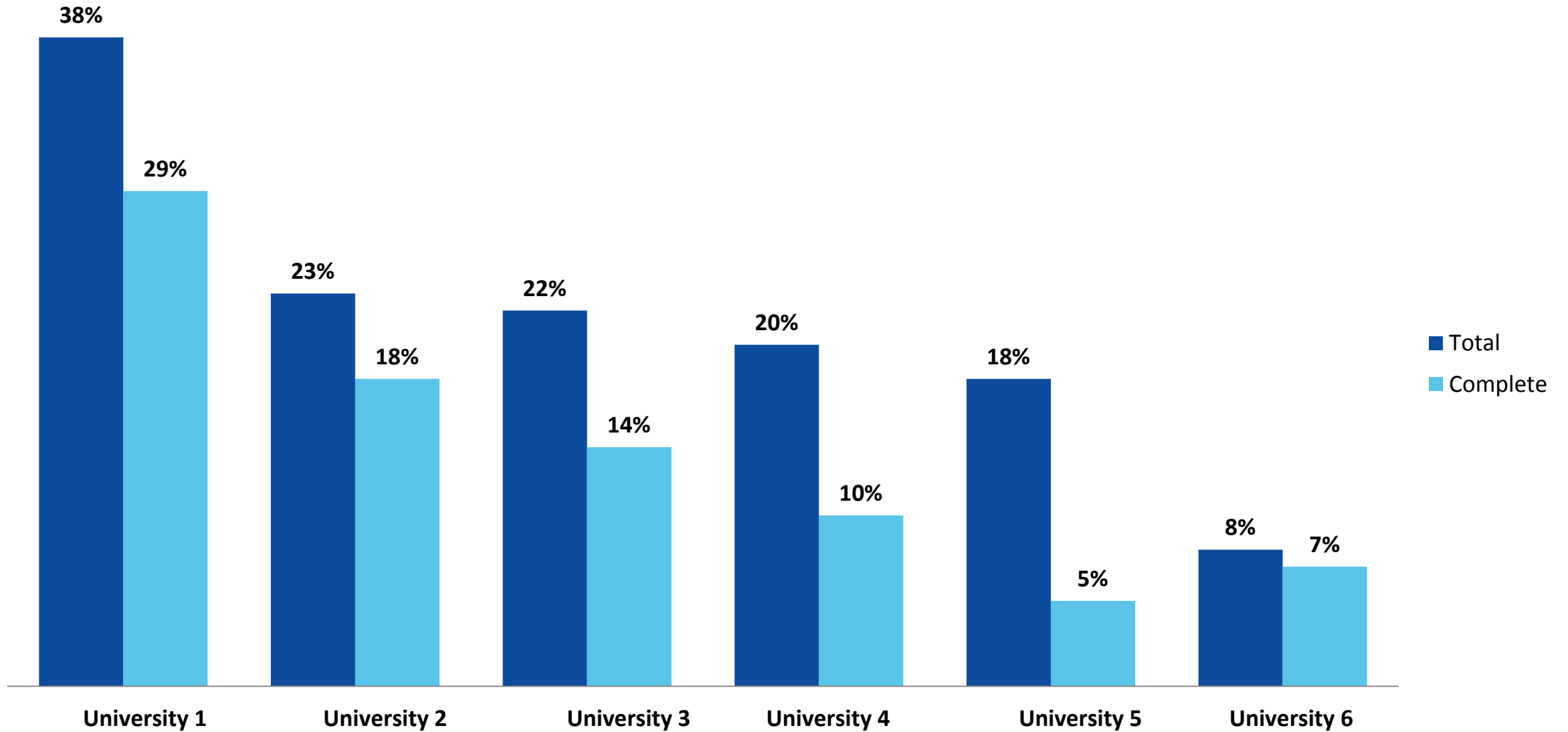
More information is available at the [SERU-International web-site](#)





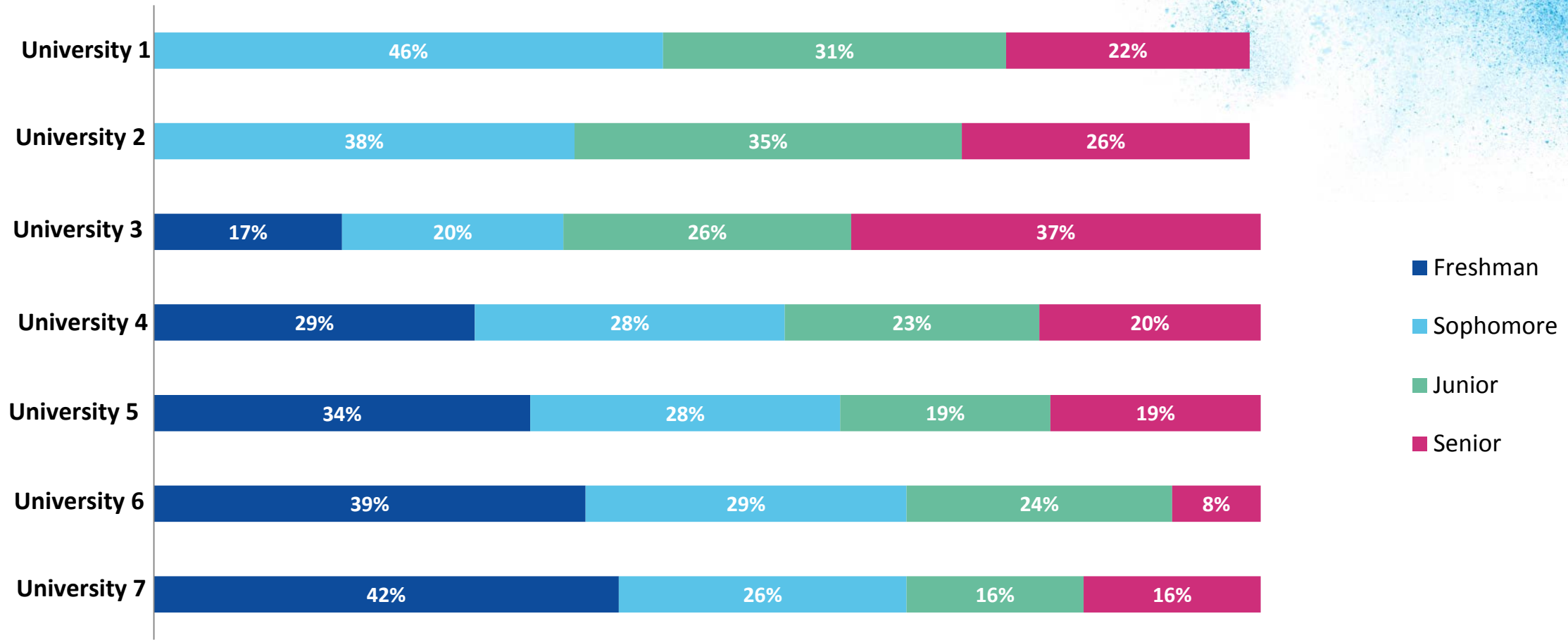
# REPORT

This Report presents the results of SERU-I undergraduate student survey administered at **University** in 2017 and provides some comparative statistics of SERU-I members



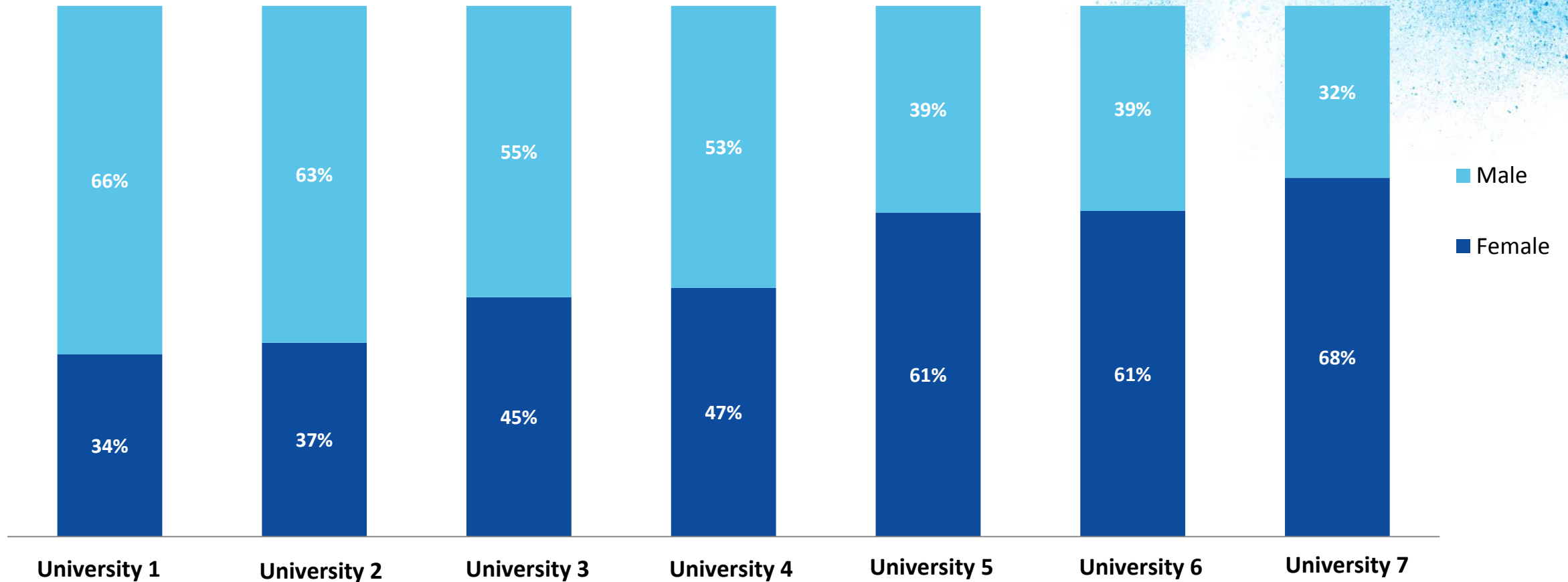
# Students Characteristics

Year of Study, by University



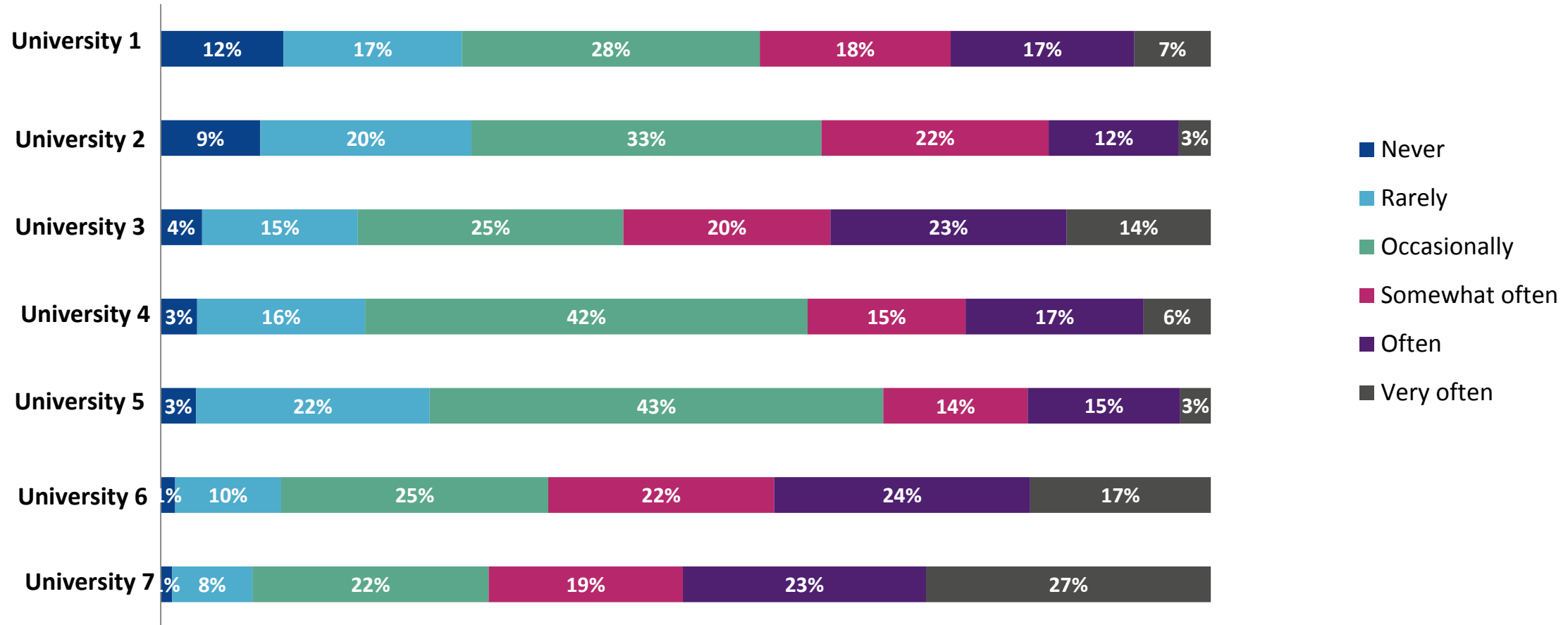


## Gender of Students, by University

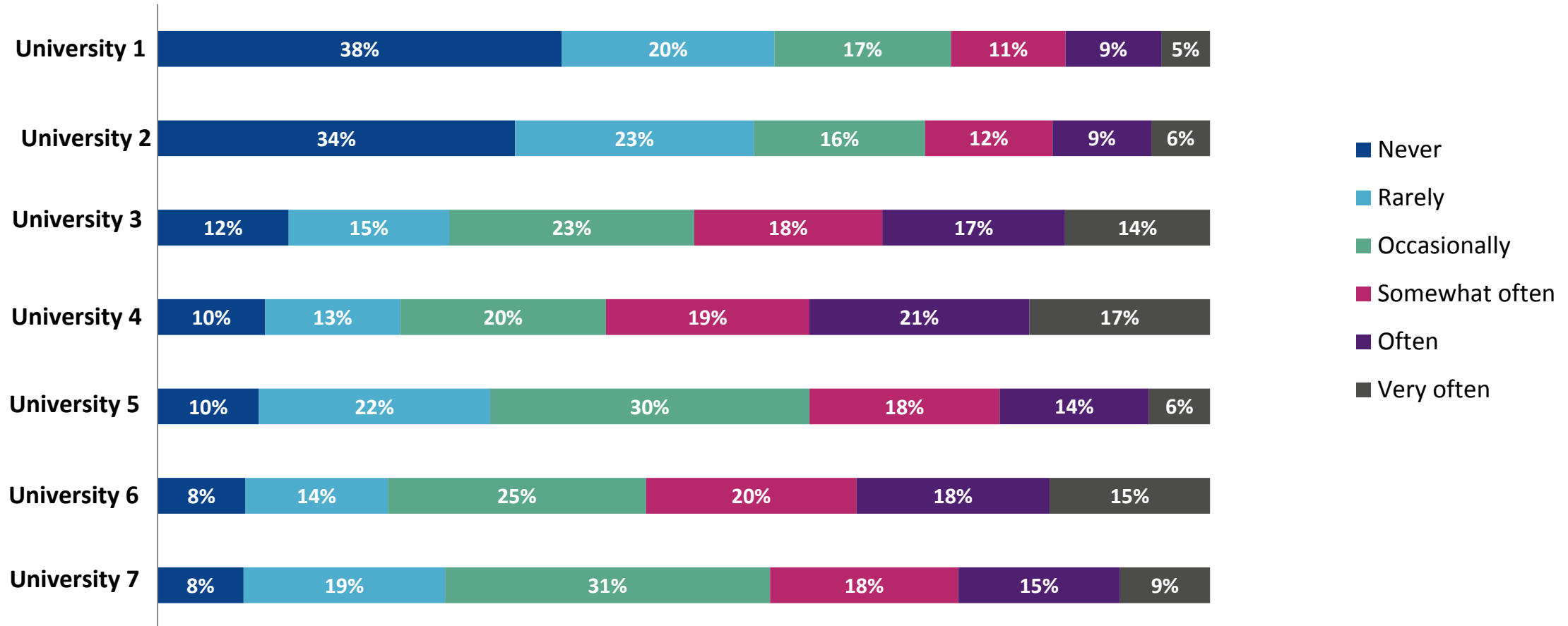


# TIME USE & ACADEMIC ENGAGEMENT

During this year, how often have you: Contributed to a class discussion

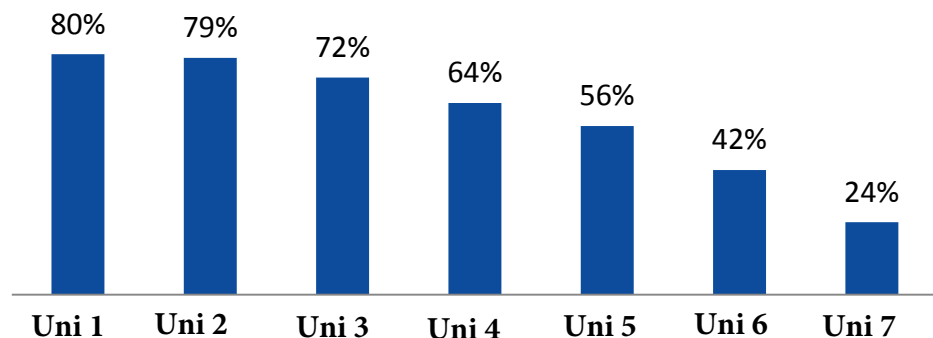


How frequently during this academic year have you done each of the following:  
Worked on class projects with classmates outside of class

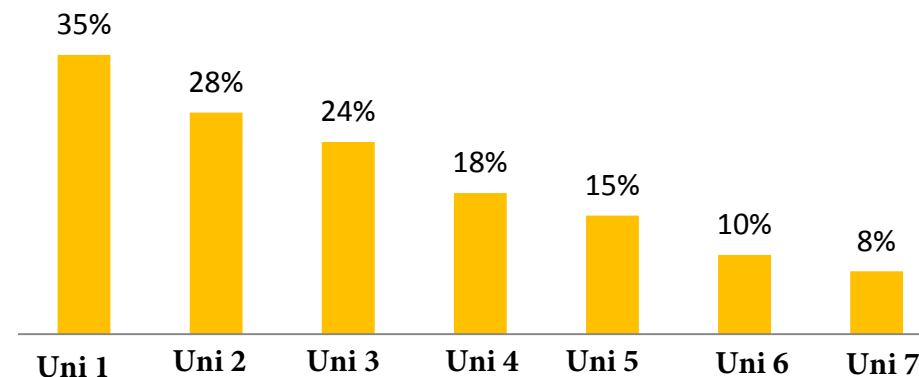


Indicate the following scholarship, research, and creative activities that you are currently doing or have completed:

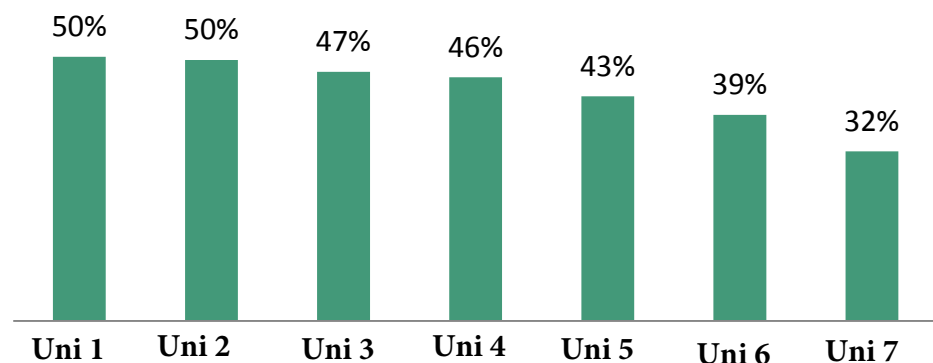
**A research project or research paper as part of your coursework**



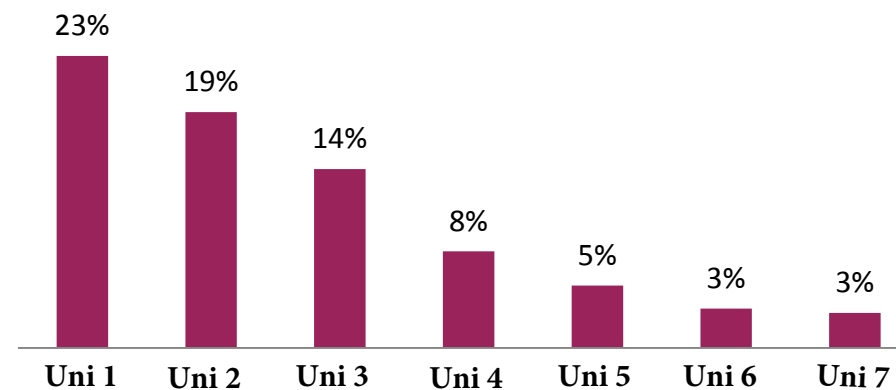
**Assist faculty in conducting research**



**At least one research methods course**



**Assist faculty with their creative project**



How many hours do you spend in a typical week (7 days) on the following activities:  
Attending classes, discussion sections, or labs?

